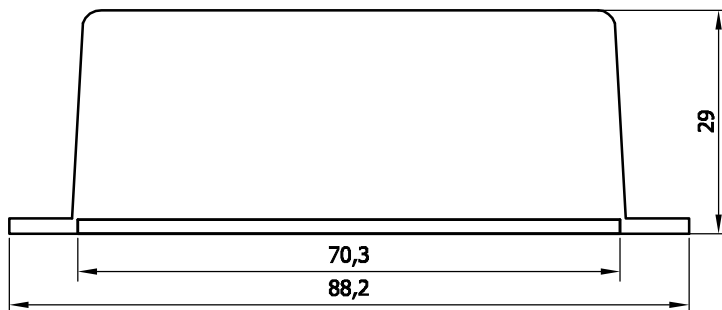
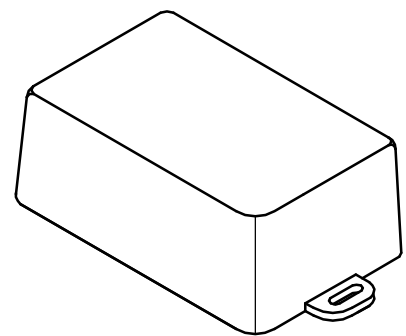
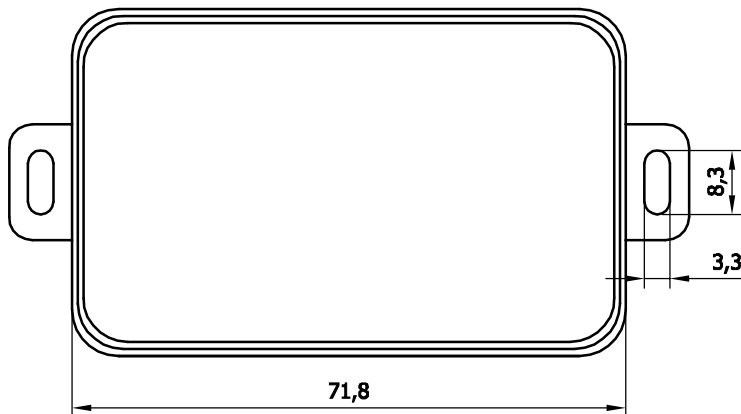
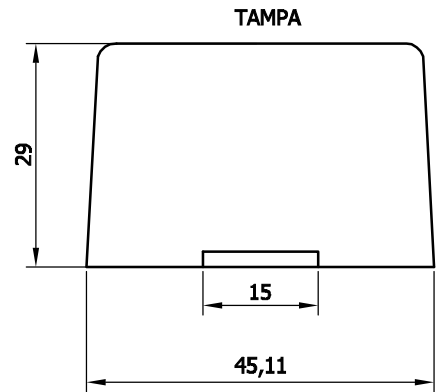
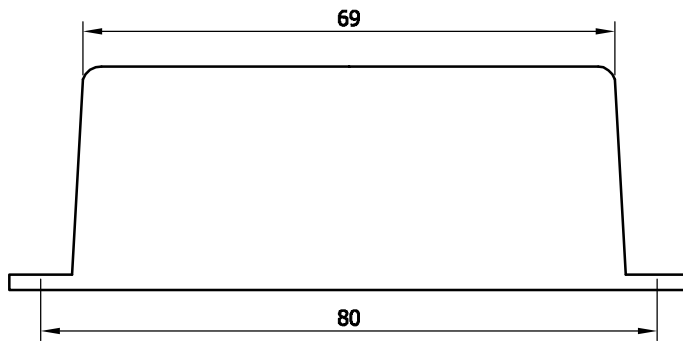
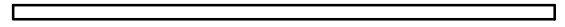
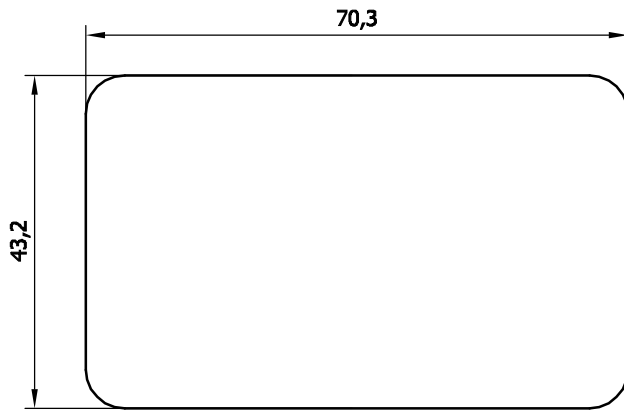


SR-17C



Obs: Fechamento com cola ou ultrassom

Rev.	Data	Descrição de Revisão
0	15/06/2012	Liberação

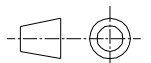
**SANTA RITA
CAMPINAS**

Título: Caixa SR-17C SEM TORRES

Desenho nº: **SR-17C**

Folha:
1 de 1

Escala:
S/E



Arquivo: \\19

Desenhado por: Radamés

Revisado por: R. Toth

Aprovado por: Toth

PADRAO04.DWG

Formato A4 (210 x 297mm)